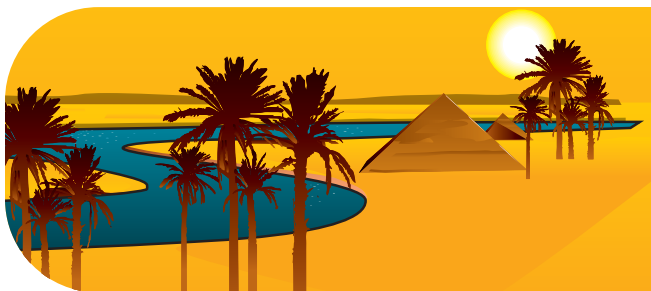




# QUEEN OF THE NILE™ LEGENDS

**ARISTOCRAT**  
it's all in the game™





## KEY FEATURES AND BENEFITS

- **PRESENCE**- Instant recognition of the classic characters
- **LEGENDARY** - Huge floor impact with excellent brand awareness
- **INNOVATIVE** - New multi game with added DSAP
- **PERFORMANCE** - Proven success and performance

## GAME SPECIFICATIONS

Configuration	20 Line + 5cr, 250cr, 100cr, DSAP
Denomination	2c, 5c
Feature Frequency	Average
Volatility	Medium - High
RTP/s	V99: 87.61% V02: 89.12%

## OPTIMUM VENUE POSITION

Clubs & Hotels:  
Alfresco gaming rooms;  
Bank with other Legend Games

For more information contact:

(03) 9644 1000

